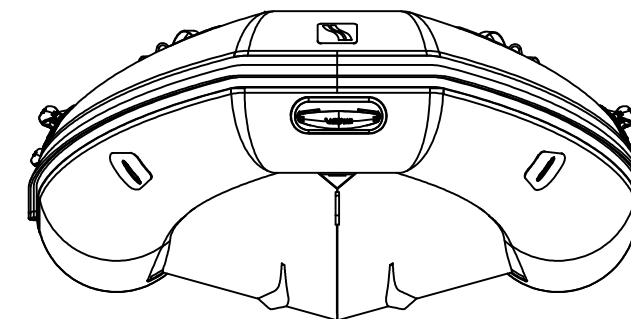
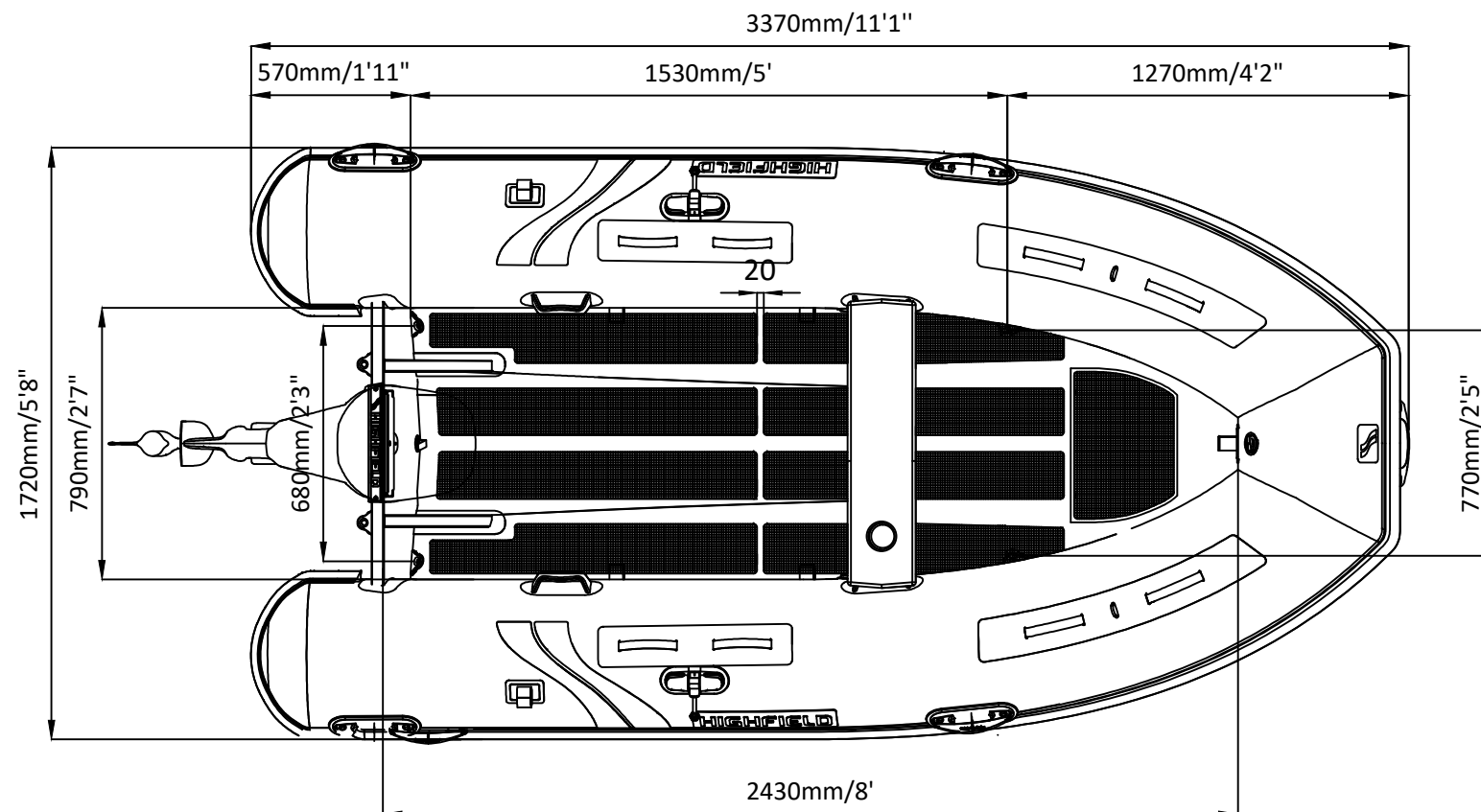
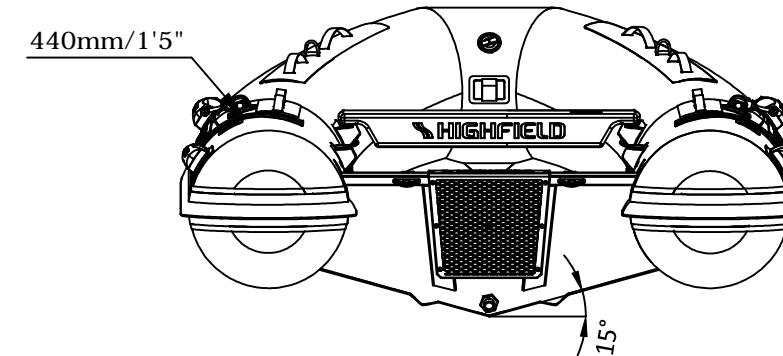
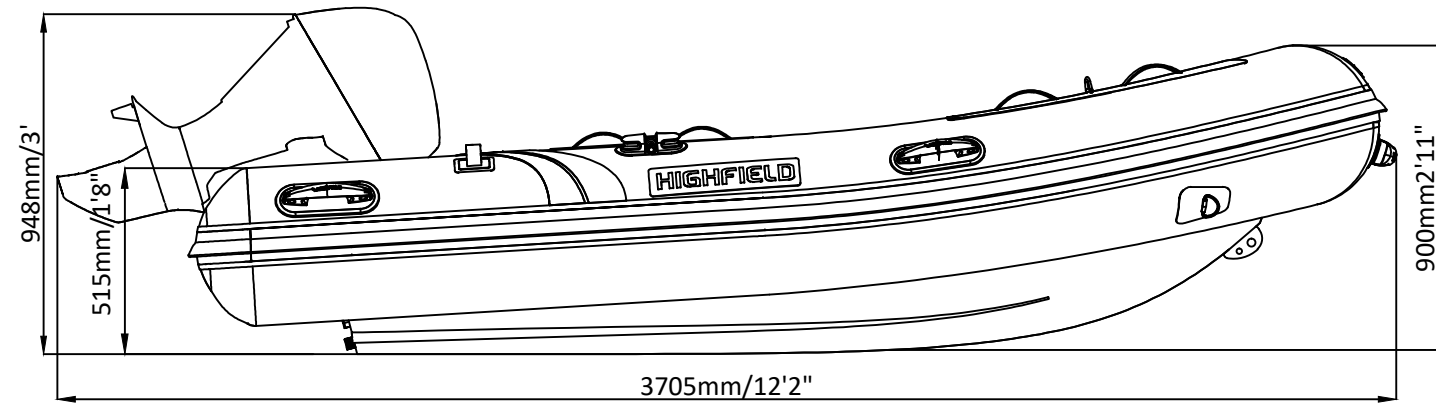


# ULTRALITE 340

# SPECIFICATIONS



SPECIFICATIONS AND MAXIMUM CAPACITIES (Subject to change without notice. Tolerances: Dimensions ±2.5% Weight ±5%)

MODEL	ISO 6185 PART	ISO 6185	Crew		Passengers		Outboard Engine		Molded seat		Oar		Fuel tank Capacity	Rollbar		Wet Weight (Approximate) 20HP (14.92KW) +Fuel		AIR CHAMBERS	Pressure							
			KG	LB	#	KG	LB	Shaft	Max power		Max weight			L	KG	LB	KG		LB	PSI	BAR					
									KW	HP	KG	LB														
UL340	2	C	663	1462	5+1	450	992	S	14.92	20	104.5	230	53	117	3	6	2	4.4	/	/	/	177.5	391	3	3.63	0.25

Weight: Boat only, not including molded seat, oars and other accessories.